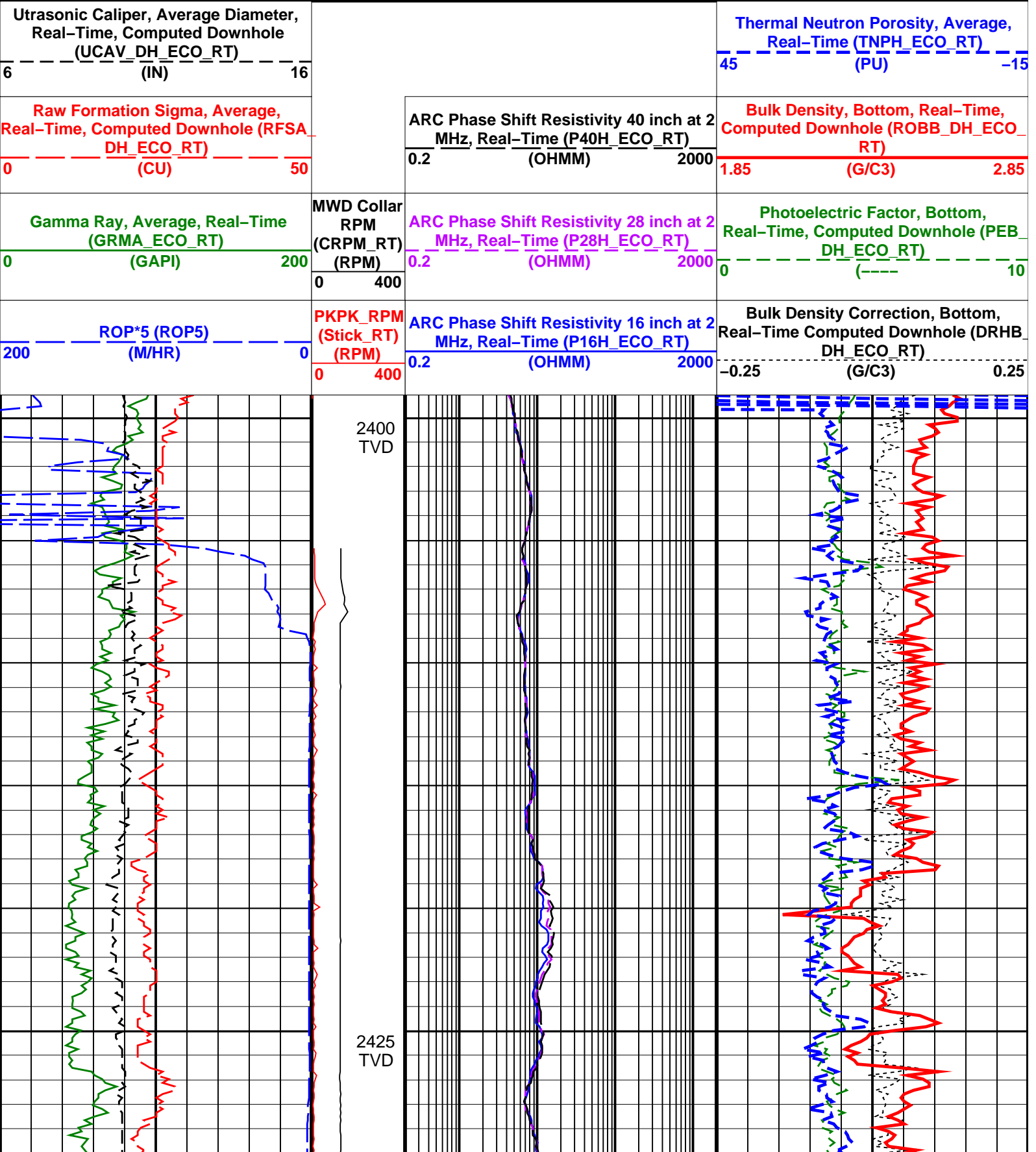
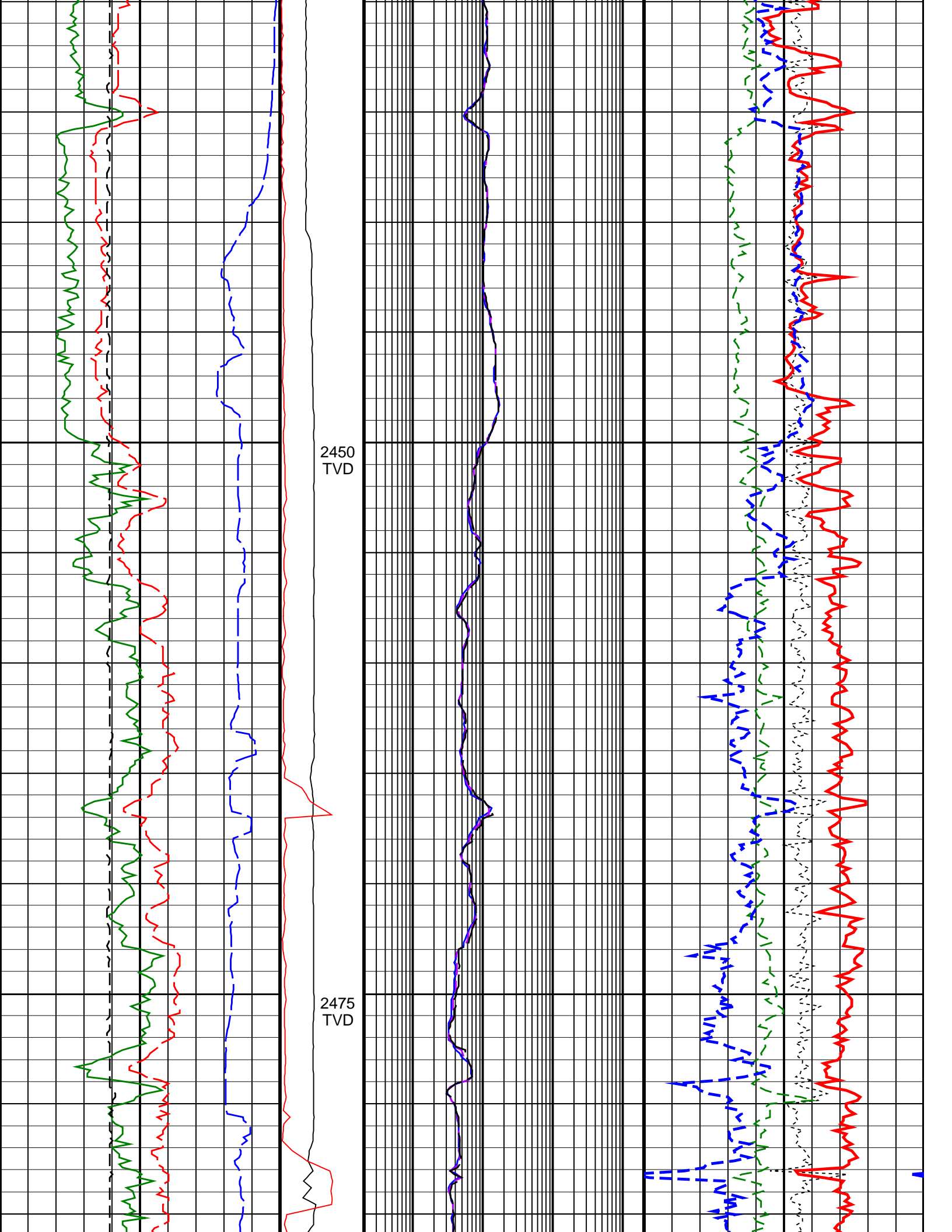


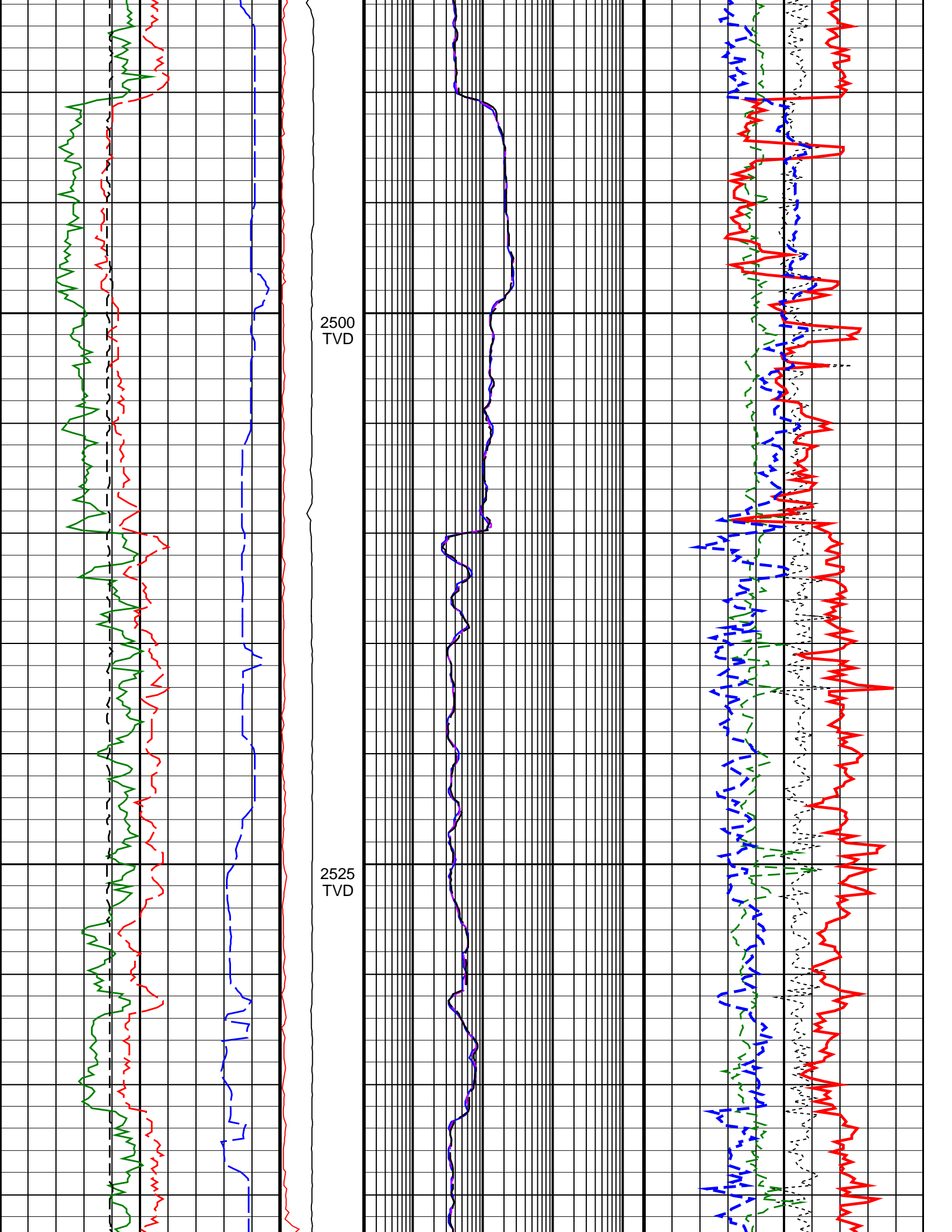
Longtom-4 H LWD RT 200TVD

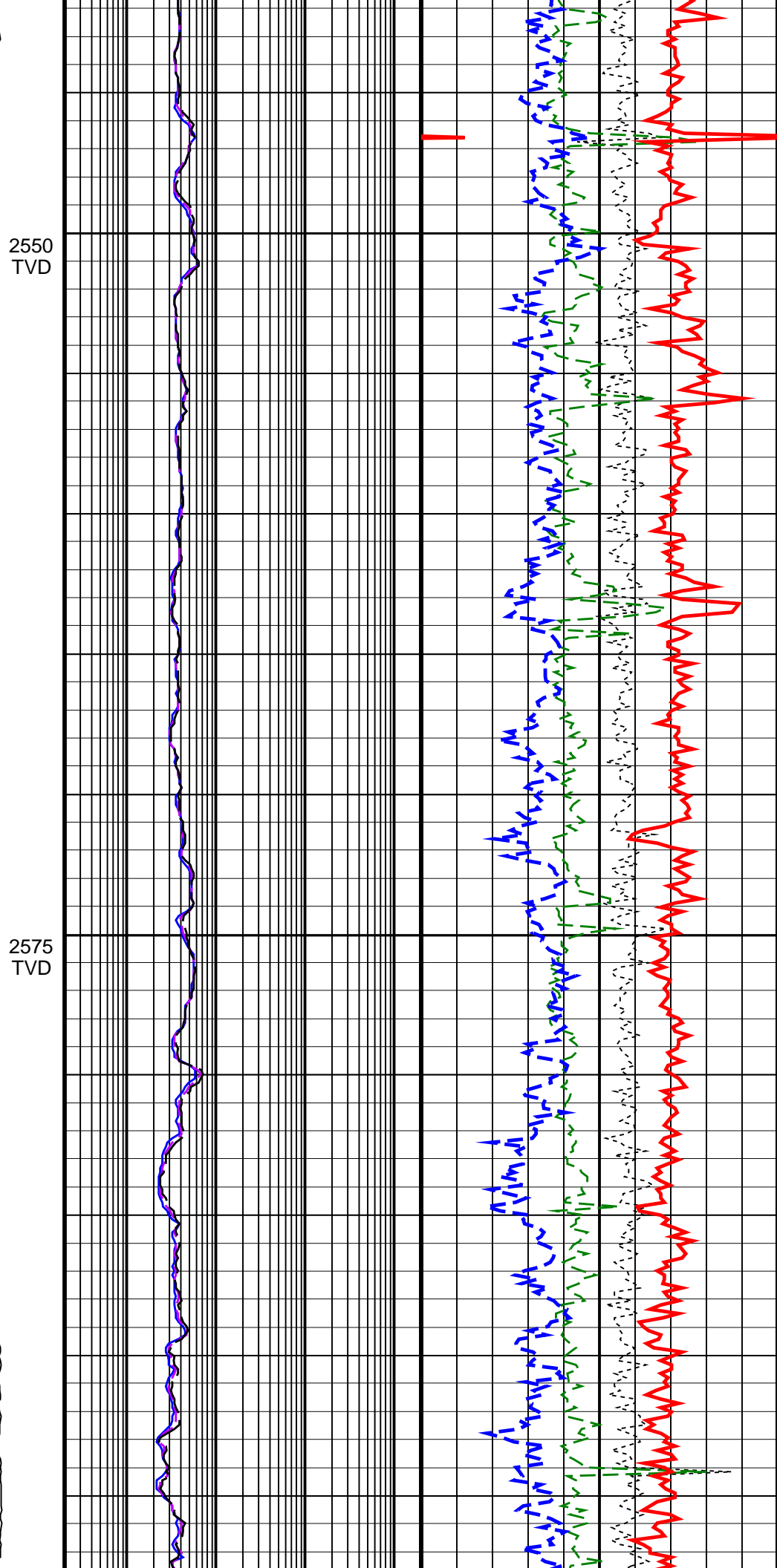
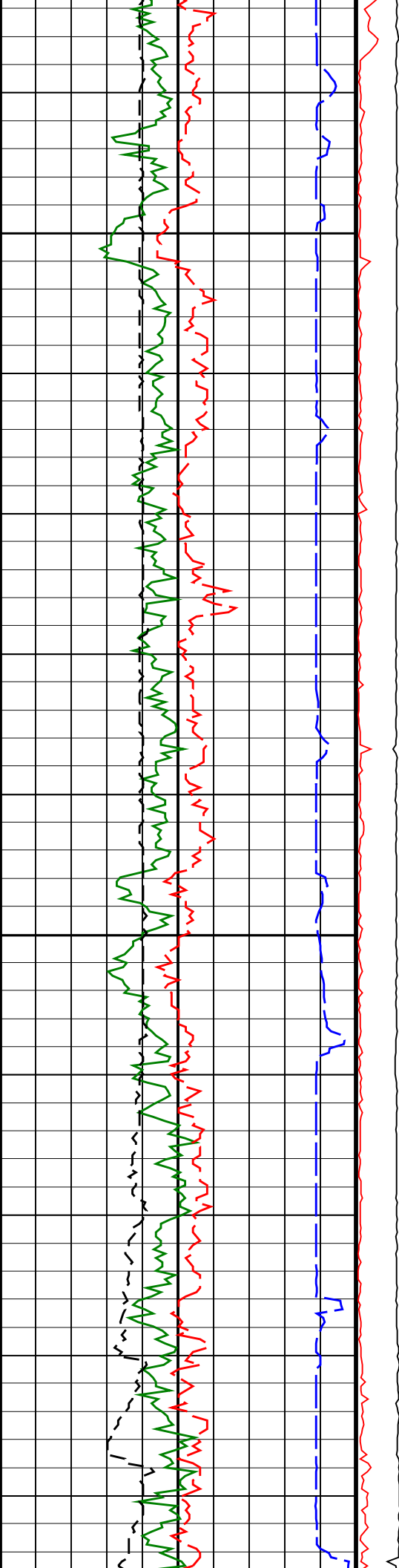
IDEAL Version: ID13_OC_08 <TVD> Vertical Scale: 1:200

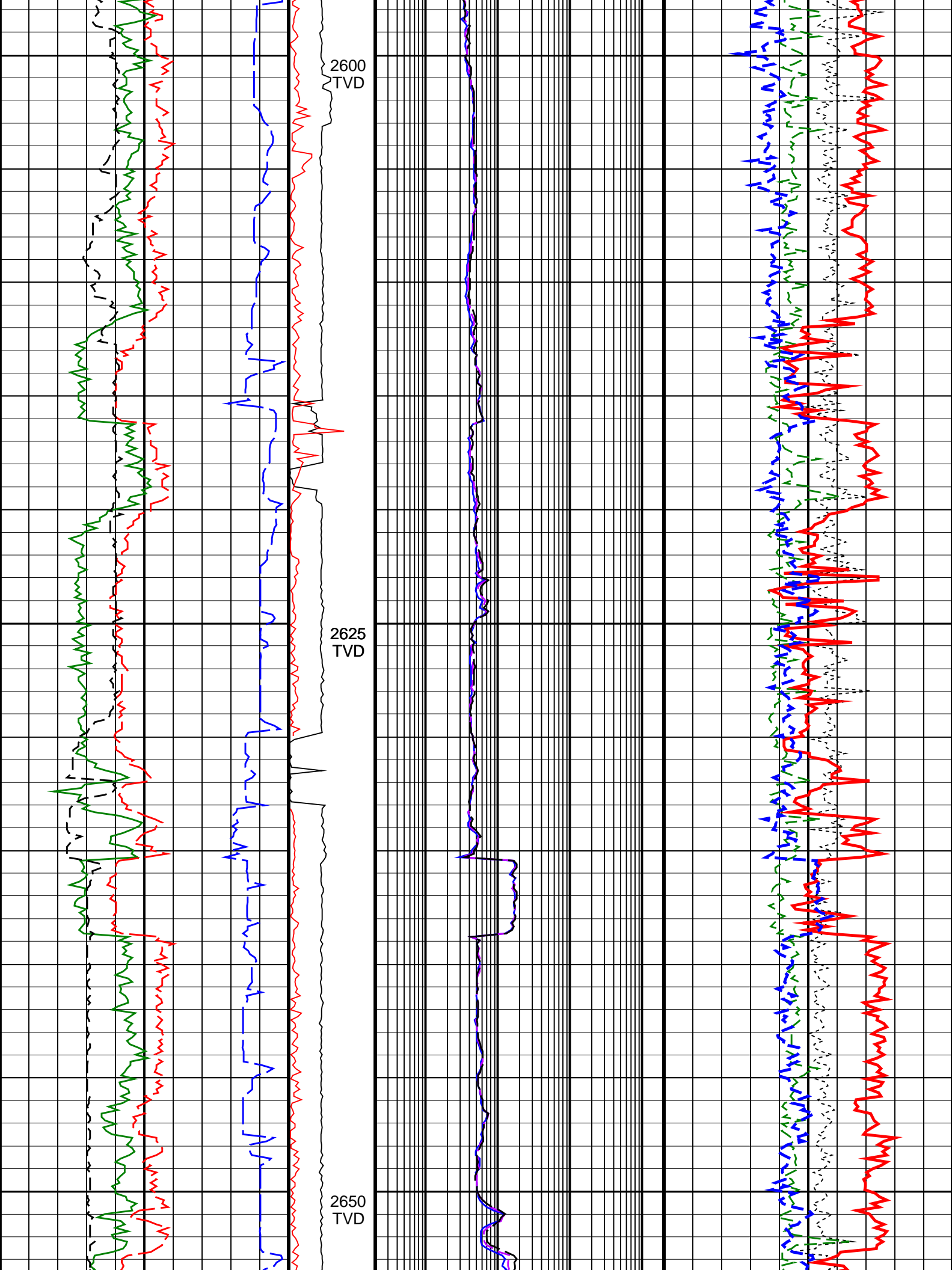
Graphics File Created: 10-Aug-2008 04:04

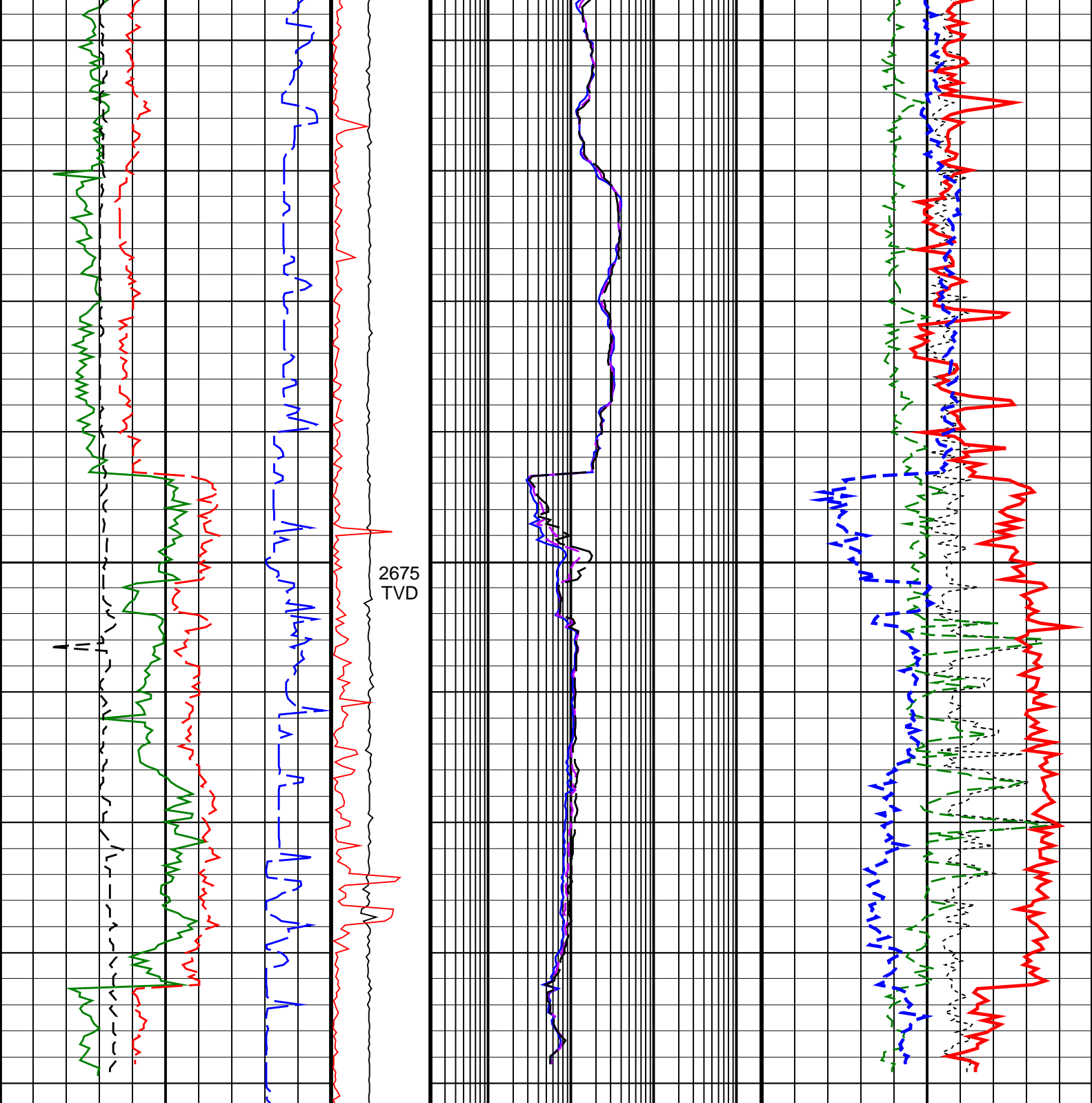












<div>ROP*5 (ROP5)</div> <div>(M/HR)</div> <div>2000</div> <div>0</div>	<div>PKPK RPM</div> <div>(Stick_RT)</div> <div>(RPM)</div> <div>0</div> <div>400</div>	<div>ARC Phase Shift Resistivity 16 inch at 2</div> <div>MHz, Real-Time (P16H_ECO_RT)</div> <div>(OHMM)</div> <div>0.2</div> <div>2000</div>	<div>Bulk Density Correction, Bottom,</div> <div>Real-Time Computed Downhole (DRHB_</div> <div>DH_ECO_RT)</div> <div>(G/C3)</div> <div>-0.25</div> <div>0.25</div>
<div>Gamma Ray, Average, Real-Time</div> <div>(GRMA_ECO_RT)</div> <div>(GAPI)</div> <div>0</div> <div>200</div>	<div>MWD Collar</div> <div>RPM</div> <div>(CRPM_RT)</div> <div>(RPM)</div> <div>0</div> <div>400</div>	<div>ARC Phase Shift Resistivity 28 inch at 2</div> <div>MHz, Real-Time (P28H_ECO_RT)</div> <div>(OHMM)</div> <div>0.2</div> <div>2000</div>	<div>Photoelectric Factor, Bottom,</div> <div>Real-Time, Computed Downhole (PEB_</div> <div>DH_ECO_RT)</div> <div>(----</div> <div>0</div> <div>10</div>
<div>Raw Formation Sigma, Average,</div> <div>Real-Time, Computed Downhole (RFSA_</div> <div>DH_ECO_RT)</div> <div>(CU)</div> <div>0</div> <div>50</div>		<div>ARC Phase Shift Resistivity 40 inch at 2</div> <div>MHz, Real-Time (P40H_ECO_RT)</div> <div>(OHMM)</div> <div>0.2</div> <div>2000</div>	<div>Bulk Density, Bottom, Real-Time,</div> <div>Computed Downhole (ROBB_DH_ECO_</div> <div>RT)</div> <div>(G/C3)</div> <div>1.85</div> <div>2.85</div>
<div>Ultrasonic Caliper, Average Diameter,</div> <div>Real-Time, Computed Downhole</div>			<div>Thermal Neutron Porosity, Average,</div>

Real-Time, Computed Downhole (UCAV_DH_ECO_RT) (IN)	Real-Time (TNPH_ECO_RT) (PU)
6	45
16	-15